



SAFETY DETECTION SYSTEM



BIBBY-STE-CROIX



**FONDERIE
LAPERLE**

Our history

Bibby-Ste-Croix has developed extensive Foundry expertise, recognized across North America.

Always listening to its customers and market requirements, it continues to develop innovative products, many of which have become standards in the industry.

One thing that will never change is our commitment to our customers.

We supply superior products.

We maintain a large inventory to meet customer demands.

Our service is quick and reliable.

You can count on Bibby !

Our commitment

is to facilitate the movement of each person in his daily life.

SDS tactile plates can alert visual handicapped persons of dangers by creating a marker on the ground that can be detected by a cane, foot and are visually indentifiable.



In harmony with the environment!
All our products are recycled and recyclable.

Permanently embedded in concrete, this durable cast iron product is maintenance free and resistant to corrosion and harsh urban conditions, such as snow plows, street cleaning machines and vehicle traffic.

MATERIAL

D = Ductile Iron

G = Cast Iron

SPECIFICATION

Truncated dome base

1" (25mm)

Truncated dome nominal height

3/16" (5mm)

Center-to-center spacing

2-7/16" (57mm) horizontal

2-3/16" (55mm) vertical

DESIGN SPECIFICATION

- Non-slip surface
- High contrast color (natural iron)
- Good adherence concret/iron reinforced by 6 posts under the plate
- Bolt ready flange for easy plates mating

STANDARDS

- ADA (2010 ADA standard for accessible design)
- Toronto requirements (TS-13.70)
- CSA B651-2012 universal accessibility criteria
- Ontario requirements (MS-13.1)
- ISO 23599-2012
- Meet the recommendations of l'Institut Nazareth & Louise-Braille

TEST AND REQUIREMENTS

ASTM A48 (Tensile strength)

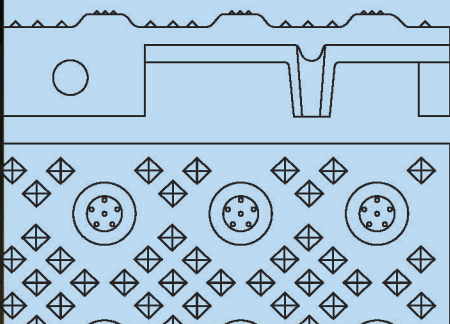
- Class 30B

ASTM C 1028 (Slip resistance)

ASTM C 501-84 (Wear resistance)

Luminance contrast per ISO 23599-2012

DIAGRAMMATIC VIEWS



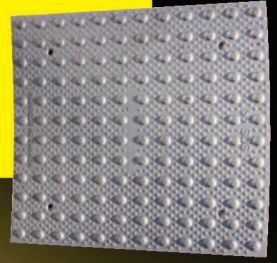
8850 RECTANGLE

24" X 18" (610mm x 457mm)
Approx. weight: 35 lbs, (15.9kg)



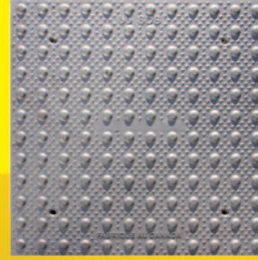
8855 RADIUS 15"

24" X 24" X 20-13/16"
(610mm x 610mm x 528mm)
Approx. weight:
42.6 lbs, (19.3kg)



8851 SQUARE

24" X 24" (610mm x 610mm)
Approx. weight: 44 lbs, (20.6kg)



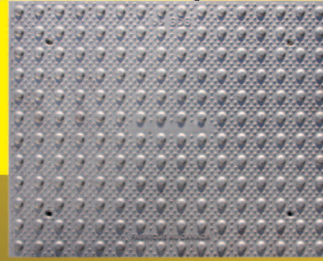
8856 RADIUS 17.5"

24" X 24" X 21-1/4"
(610mm x 610mm x 540mm)
Approx. weight:
43 lbs, (19.5kg)



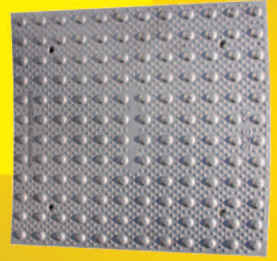
8852 RECTANGLE

24" X 30" (762mm x 610mm)
Approx. weight: 55.7 lbs, (25.3kg)



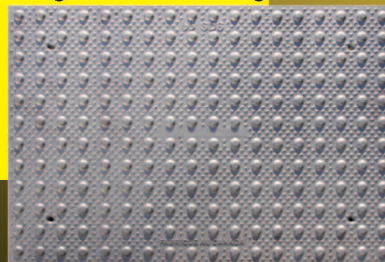
8857 RADIUS 20"

24" X 24" X 21-5/8"
(610mm x 610mm x 549mm)
Approx. weight:
43.3 lbs, (19.6kg)



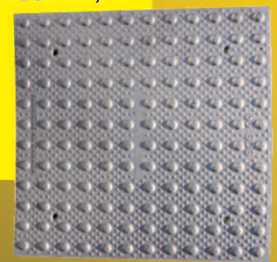
8853 RECTANGLE

24" X 36" (914mm x 610mm)
Approx. weight: 65.7 lbs, (29.8kg)



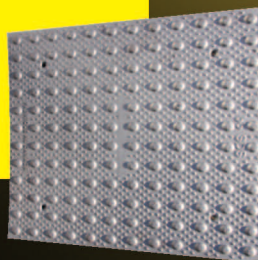
8858 RADIUS 25"

24" X 24" X 22-1/16"
(610mm x 610mm x 561mm)
Approx. weight:
44 lbs, (19.9kg)



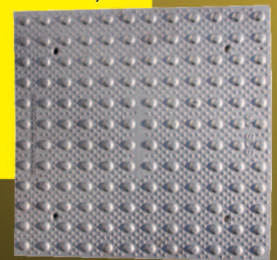
8854 RADIUS 10"

24" X 24" X 19-3/16"
(610mm x 610mm x 488mm)
Approx. weight:
43.2 lbs, (19.6kg)



8859 RADIUS 35"

24" X 24" X 22-5/8"
(610mm x 610mm x 575mm)
Approx. weight:
44 lbs, (19.9kg)

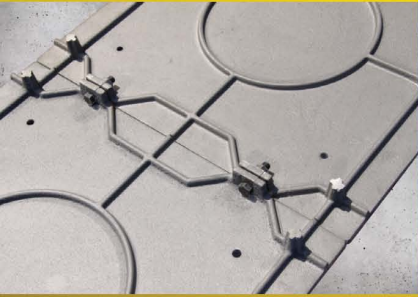




APPLICATIONS:

- Pedestrian crossing
- Transit platforms or walkways (train, subway, maritime)
- Stair landing

EASY INSTALLATION, IN 4 STEPS



STEP 1

For the assembly of several plates, bolt plates with bolts and nuts 1/2" x 2"

STEP 2

Place the plates on freshly poured concrete in the designated area.

STEP 3

Knock gently on the plates with a rubber hammer until the appearance of the cement in the vent holes.

STEP 4

Once the plate is flush to the level of the concrete, clean off the excess concrete.



Made in Canada

QUÉBEC

Bibby-Ste-Croix

6200 Principale
Ste-Croix (Québec)
GOS 2HO
Tel. : 418-926-3262 or
1-800-463-3480
Fax: 418-926-2430

Fonderie Laperle

106, Montée de la Basse, C.P. 48
St-Ours (Québec)
JOG 1PO
Tel.: 450-785-2205 or
1-800-567-3753
Fax: 450-785-5588

ONTARIO

1757, Burlington St. East
Hamilton (Ontario)
L8H 3L5
Tel.: 905-312-4776 or
1-800-312-4776
Fax: 905-312-1434

ALBERTA

801 Smelter Ave S.E.
Medicine Hat, (Alberta)
T1A 3N4
Tel.: 403-527-3553
Fax: 403-527-7454

WW-1411
Revised,
December 3, 2014